

PINEWOOD LAKE

A PARCEL OF LAND LYING IN THE NORTHEAST ONE-QUARTER, OF SECTION 10, TOWNSHIP 44 SOUTH, RANGE 42 EAST,
THE CITY OF GREENACRES, PALM BEACH COUNTY, FLORIDA.

SHEET 3 OF 3
AUGUST, 2005
September

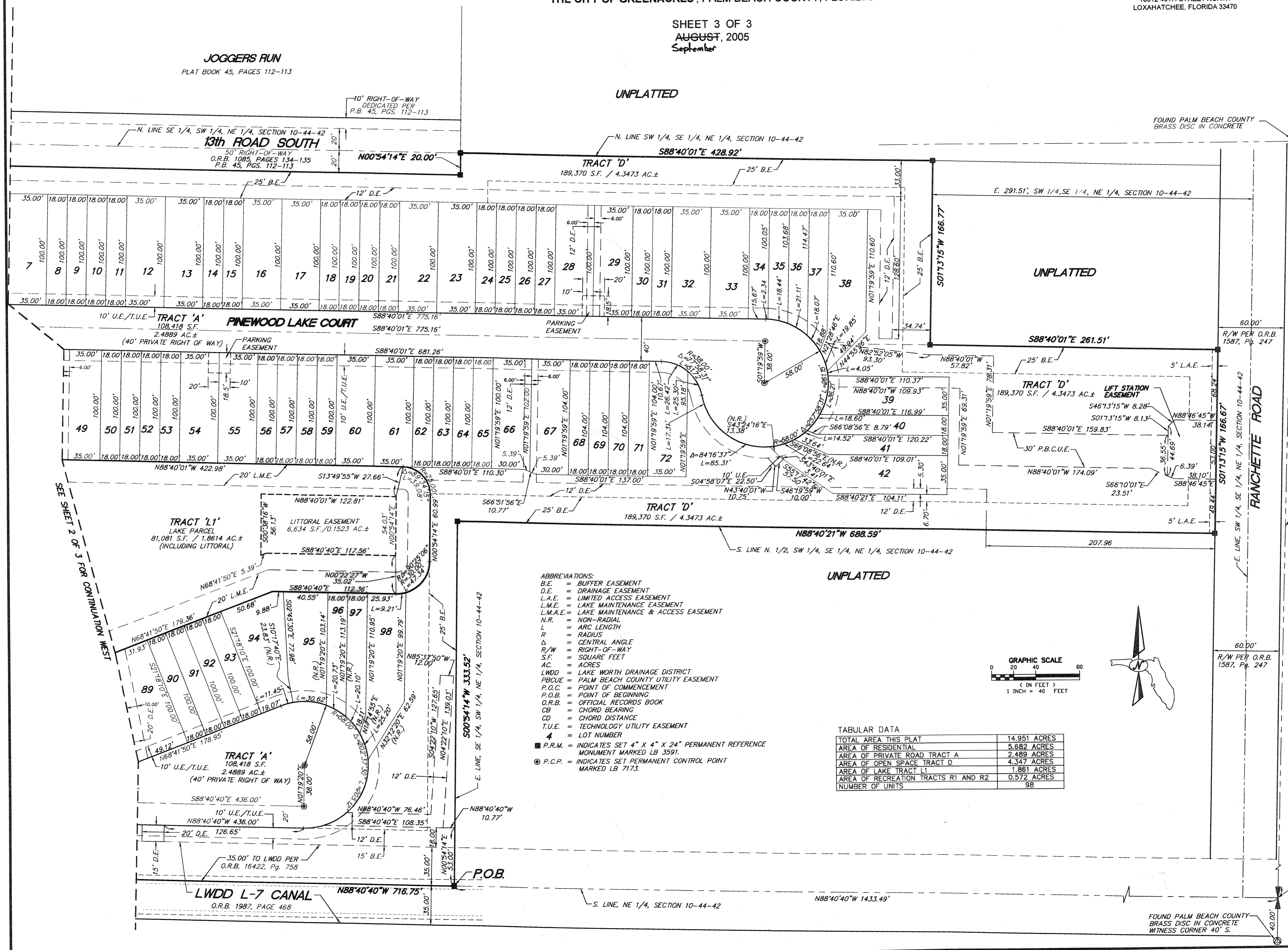
THIS INSTRUMENT PREPARED BY:
GEORGE D. GIBSON, III, P.S.M.
STATE OF FLORIDA REGISTRATION NO. 5830
G3 SURVEY SOLUTIONS, INC.
LB-7173
18312 49TH STREET NORTH
LOXAHATCHEE, FLORIDA 33470

60

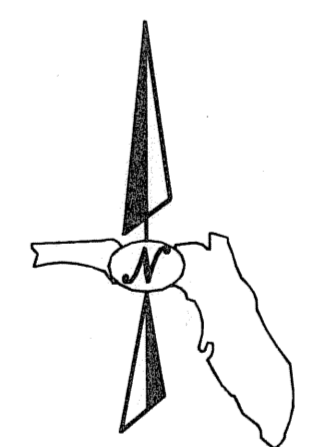
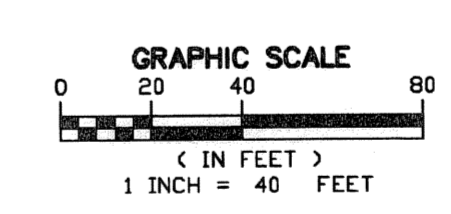
STATE OF FLORIDA
COUNTY OF PALM BEACH
THIS PLAT WAS FILED FOR
RECORD AT _____ M.
THIS _____ DAY OF _____
A.D. 2005 AND DULY RECORDED
IN PLAT BOOK _____ ON
PAGES _____ AND _____

SHARON R. BOCK
CLERK AND COMPTROLLER

BY: _____
DEPUTY CLERK



- ABBREVIATIONS:
- B.E. = BUFFER EASEMENT
 - D.E. = DRAINAGE EASEMENT
 - L.A.E. = LIMITED ACCESS EASEMENT
 - L.M.E. = LAKE MAINTENANCE EASEMENT
 - L.M.A.E. = LAKE MAINTENANCE & ACCESS EASEMENT
 - N.R. = NON-RADIAL
 - L = ARC LENGTH
 - R = RADIUS
 - Δ = CENTRAL ANGLE
 - R/W = RIGHT-OF-WAY
 - S.F. = SQUARE FEET
 - AC. = ACRES
 - LWDD = LAKE WORTH DRAINAGE DISTRICT
 - PBCUE = PALM BEACH COUNTY UTILITY EASEMENT
 - P.O.C. = POINT OF COMMENCEMENT
 - P.O.B. = POINT OF BEGINNING
 - O.R.B. = OFFICIAL RECORDS BOOK
 - CB = CHORD BEARING
 - CD = CHORD DISTANCE
 - T.U.E. = TECHNOLOGY UTILITY EASEMENT
 - 4 = LOT NUMBER
- P.R.M. = INDICATES SET 4" X 4" X 24" PERMANENT REFERENCE MONUMENT MARKED LB 3591.
- P.C.P. = INDICATES SET PERMANENT CONTROL POINT MARKED LB 7173.



TABULAR DATA

TOTAL AREA THIS PLAT	14.951 ACRES
AREA OF RESIDENTIAL	5.682 ACRES
AREA OF PRIVATE ROAD TRACT A	2.489 ACRES
AREA OF OPEN SPACE TRACT D	4.347 ACRES
AREA OF LAKE TRACT L1	1.861 ACRES
AREA OF RECREATION TRACTS R1 AND R2	0.572 ACRES
NUMBER OF UNITS	96

SEE SHEET 2 OF 3 FOR CONTINUATION WEST

P.O.C. EAST 1/4 CORNER SECTION 10-44-42 CORNER FALLS IN CANAL

FOUND PALM BEACH COUNTY BRASS DISC IN CONCRETE WITNESS CORNER 40' S.